

## ChitoClot Artery Compression Device

Hemostatic Series 

AnsCare ChitoClot Artery Compression Device combination of device and ChitoClot Pad can deliver more effective coagulation effect. Continuous and stable compression can shorten hemostasis and restraint time, thus reduce the risk of complications.

- Spot and adjustable compression to ensure blood return
- Smart rotating knob design for precise fit and optimal patient comfort
- Transparent structure to allow visual control of the puncture side



### Specifications

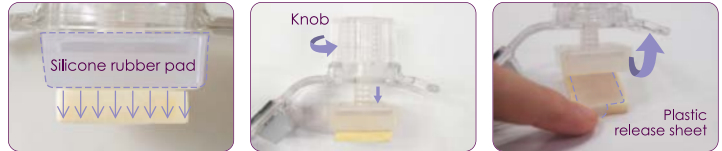
Composition	Knob, Fixing plate, Pressure plate, Silicone pressure, mat, Flannel belt, ChitoClot pad
Sterilization	EO sterilization

### Applications

Arterial bleeding management after radial / femoral intervention surgery

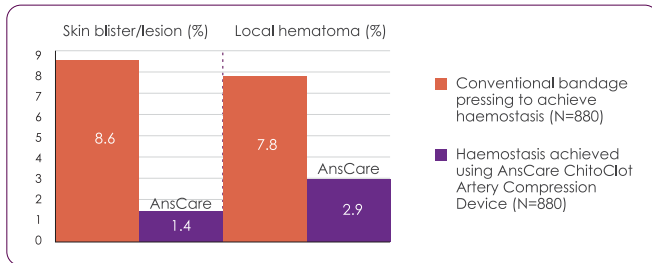
## Product Design

- Silicone rubber pad provides a stable and uniform pressure on the surface.
- Smart rotating knob quickly and easily adjusts pressure.
- Soft flannel belt with velcro provides a firm but comfortable fixation under tension.
- Plastic release sheet enables medical staffs to remove the compression device first.
- ChitoClot pad can be left on the puncture site for further processing.



## Findings from Clinical Study

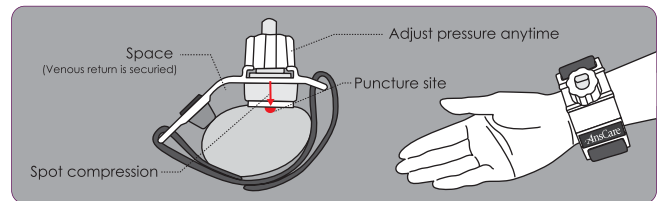
### A simple and comfortable solution for effective haemostasis



\* Clinical application of AnsCare ChitoClot Radial Artery Compression Device undergoing transradial catheterization. Chinese Journal of Cardiovascular Research, February 2015, Vol.13, No.2

### Protect Radial Artery to prevent early or late radial artery occlusion (RAO)

Oclusively compressing the radial artery to achieve haemostasis was making chronic occlusion of the radial artery more frequent. (Circ. Cardiovasc. Interv., February 2012)



## Instruction for use

### ChitoClot Artery Compression Device (Radial)

- Withdraw the sheath for 2-3 cm and clean the skin incision area.
- Position the centre point of ChitoClot Pad to the arterial puncture site.
- Wind around the wrist with flannel band. Tighten it on fixing plate by attaching the black velcro to the flannel band.
- Withdraw the sheath in a parallel-to-forearm direction, and quickly apply pressure vertically through device.
- Rotate the knob clockwise till the top of the knob meets the top of the rotating core to serve appropriate pressure.
- Assess the pulses of radial and ulnar artery. Check and confirm there's no bleeding from the puncture site.

### ChitoClot Artery Compression Device (Femoral)

- Withdraw the sheath for 2-3 cm and clean the skin incision area.
- Position the centre point of silicone pressure mat to the femoral puncture site.
- After rotating the thigh from the inner side, fix the short flannel band to the black Velcro.
- After rotating waist from patient's dorsal side to abdominal side, fix the long flannel band to the black velcro.
- Withdraw the sheath in a parallel-to-leg direction and quickly apply pressure with the device to stop bleeding.
- Keep rotating the knob clockwise to the end until there's no bleeding from the puncture site.

### Order Information

<b>Radial</b>	AC-1-1 (With twin adhesive)	AC-1-2 (With ChitoClot Pad)	AC-1-3 (N/A)
<b>Femoral</b>	AC-2-1 (With twin adhesive)	AC-2-2 (With ChitoClot Pad)	AC-2-3 (N/A)

